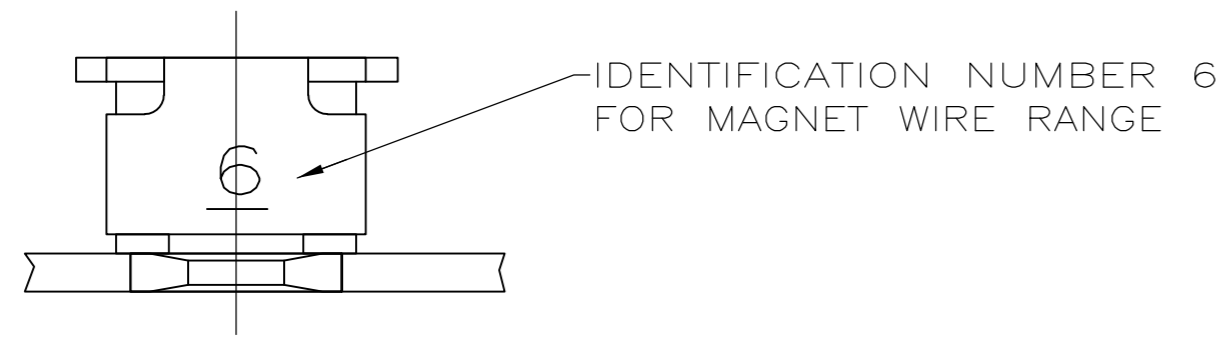
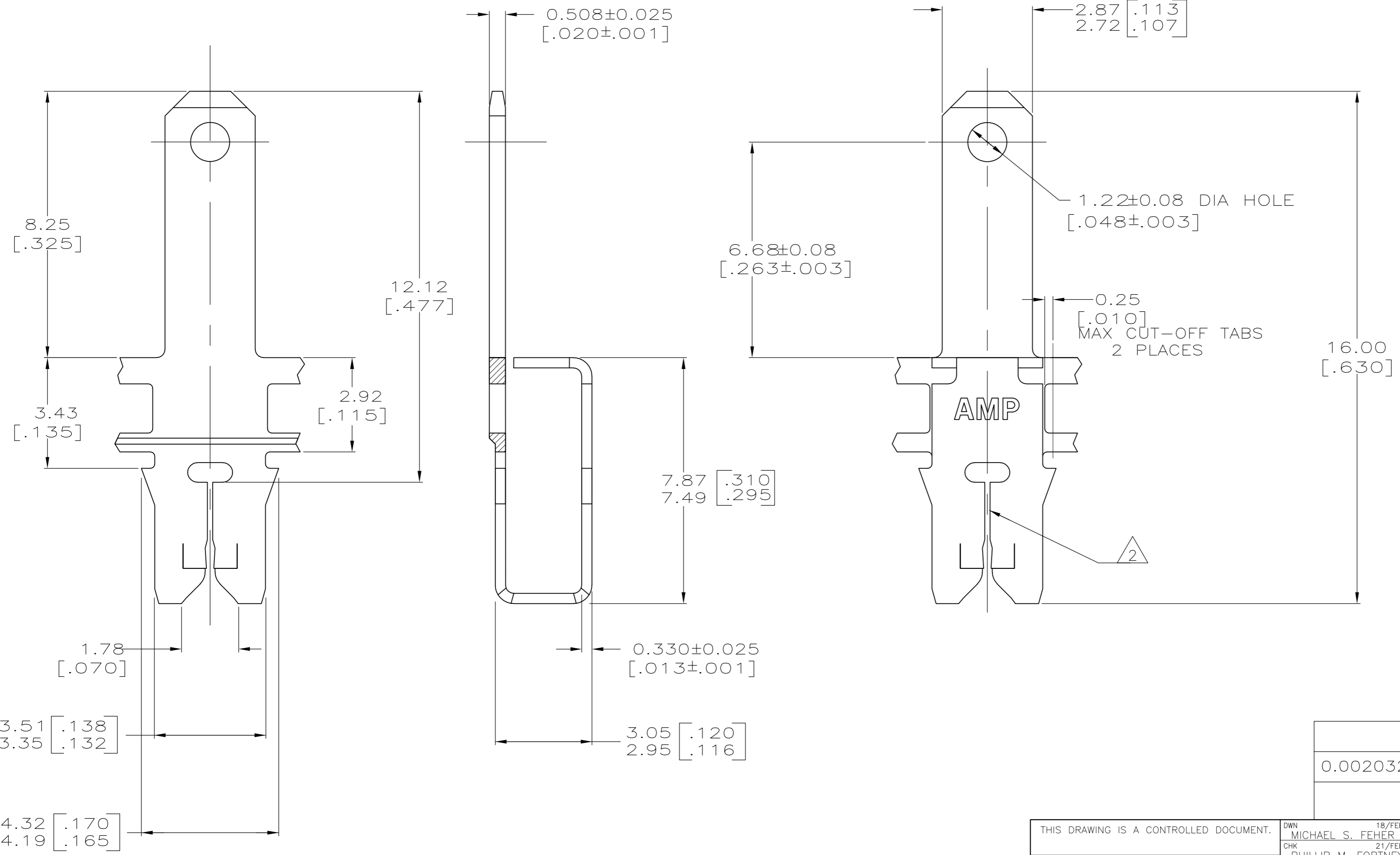


THIS DRAWING IS UNPUBLISHED. RELEASED FOR PUBLICATION
 © COPYRIGHT - By - ALL RIGHTS RESERVED.

LOC	DIST	REVISIONS			
P	LTR	DESCRIPTION	DATE	DWN	APVD
AF	50	E2	ECR-15-005665	10AUG2015	BDA PKS



- 1 CONTINUOUS STRIP ON REELS WITH TERMINALS LOCATED ON 5.59±0.08 [.220±.003] CENTERS.
- 2 SLOT TERMINATES EITHER A SINGLE OR DOUBLE MAGNET WIRE OF THE SAME SIZE.
 COPPER RANGE: 0.25-0.36mm [#30-#27] AWG.
 ALUMINUM RANGE: 0.32-0.45mm [#28-#25] AWG.
 ALUMINUM WIRE RANGE APPLIES FOR POST-TIN PLATED VERSIONS ONLY.
- 3 PRILIMINARY - NOT FOR PRODUCTION



UNPLATED	3 63777-2
0.002032 [.000080] MIN TIN	63777-1
FINISH	PART NO

THIS DRAWING IS A CONTROLLED DOCUMENT.		DWN	18/FEB/94	TE Connectivity	
		CHK	21/FEB/94	MICHAEL S. FEHER	
		APVD	21/FEB/94	PHILLIP M. FORTNEY	
		PRODUCT SPEC	TL SHUTTER		
		APPLICATION SPEC	108-2012		
		WEIGHT	114-2046		
		CUSTOMER DRAWING	SCALE	SHEET	REV
			10:1	1 OF 1	E2